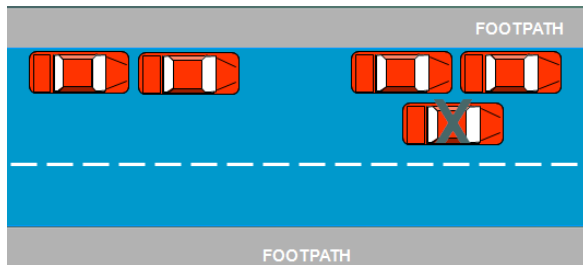


DOUBLE PARKING

A driver commits an offence by stopping a vehicle on a road when another vehicle is parked between the driver's vehicle and the kerb.

NOT PARALLEL PARKED

A driver commits an offence by stopping a vehicle on a road when the left hand wheels of the vehicle are not as near as practical to the kerb (no more than 300mm from the kerb)

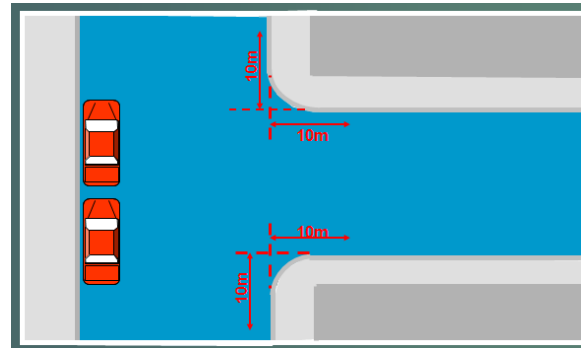


Don't just think of the safety of your child.

Remember other parents' children use the road too!

10 METRE RULE

A driver must not stop within 10 metres from the nearest point of an intersecting road at an intersection / T-Intersection without traffic lights.



holdfast.sa.gov.au
Brighton Civic Centre
24 Jetty Road, Brighton SA 5048
PO Box 19, Brighton SA 5048

P 08 8229 9999
F 08 8298 4561
E mail@holdfast.sa.gov.au

SCHOOLS, STUDENTS AND TRAFFIC

PARKING RESTRICTIONS AT SCHOOLS ARE FOR THE SAFETY OF ALL CHILDREN

The Australian Road Rules provide a variety of parking restrictions at and near schools to achieve a safer environment for all children.

These restrictions are designed to optimise traffic safety and movement.



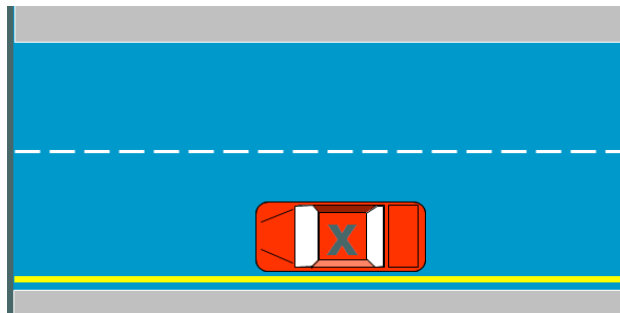
NO STOPPING ZONE

This zone is usually located adjacent to school entrances. This is to ensure that a clear view of the road and footpath is maintained for pedestrians and drivers.



CONTINUOUS YELLOW EDGE LINE

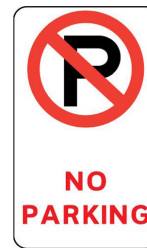
A continuous yellow edge line has the same requirements as a no stopping sign.



NO PARKING ZONE

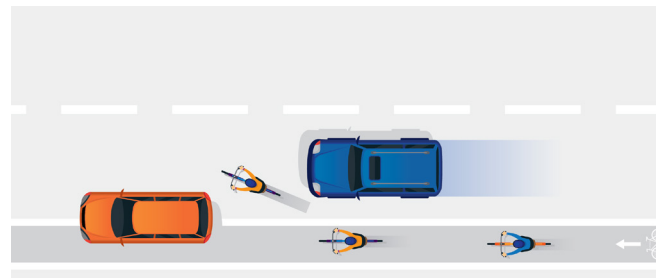
Drivers are allowed to stop in this zone for a maximum of **two (2) minutes from the time of stopping** to pick up or drop off passengers.

If the passenger is not at the kerb the driver must vacate the zone immediately.



BICYCLE LANES

Drivers are committing an offence if their vehicle becomes stationary, even though the motor is running and the driver remains seated in the vehicle or waiting in a queue to use a legal parking zone.

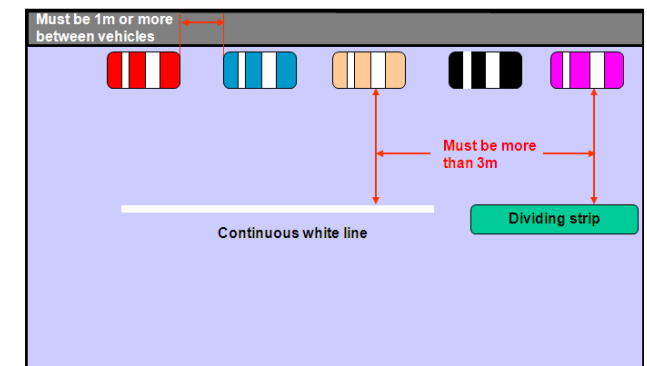


QUEUING TO PARK

Drivers are committing an offence if their vehicle becomes stationary even though the motor is running and the driver remains seated in the vehicle or waiting in a queue to use a legal parking zone.

WHITE CENTRE LINE

A vehicle must not stop or park at anytime alongside a white centre line.



WARNING: It is not a defence if you stop in these zones to answer a mobile phone, queuing to park or dropping off or picking up passengers